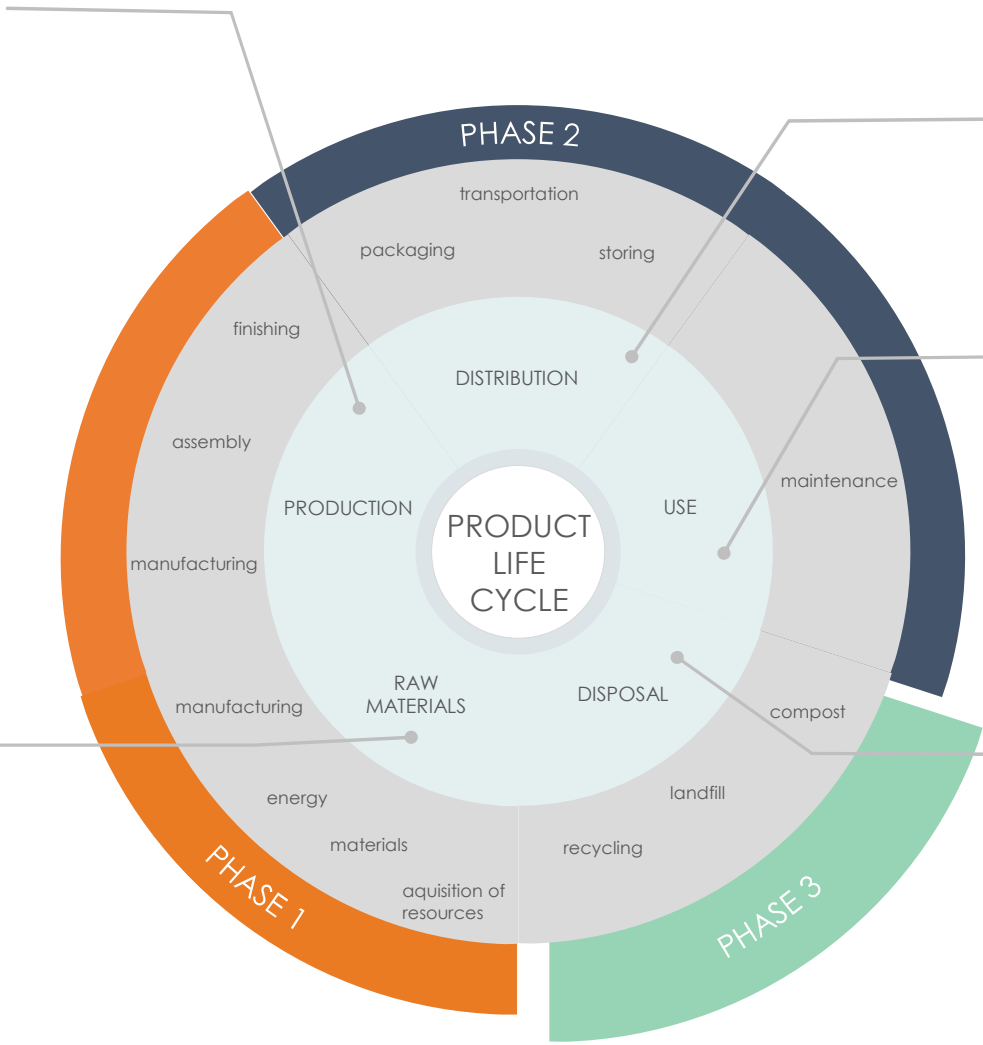


selection of furniture producers:

- who works with suppliers who are certified ISO14001:2015; FSC certified; ISO 9001:2015; Social responsibility standards
- Europe based producers with long term "Go Green strategies"
- who uses as less as possible subcontracting, i.e inhouse production for at least 90% of the concept;
- strong engineering skills;
- state of the art machineries (electricity consumption, pollution (dust, noise), etc.
- ERP enable smart planning just on time combined with optimal production batches

selection of raw materials at the early design stage:

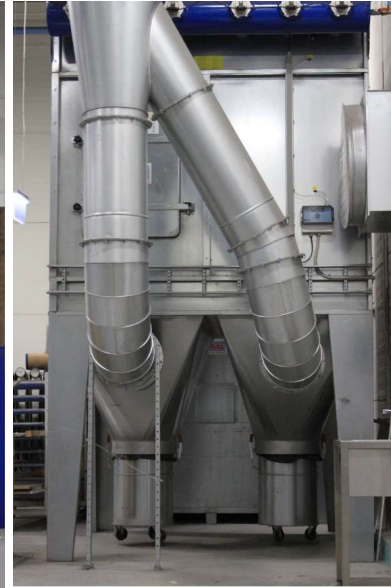
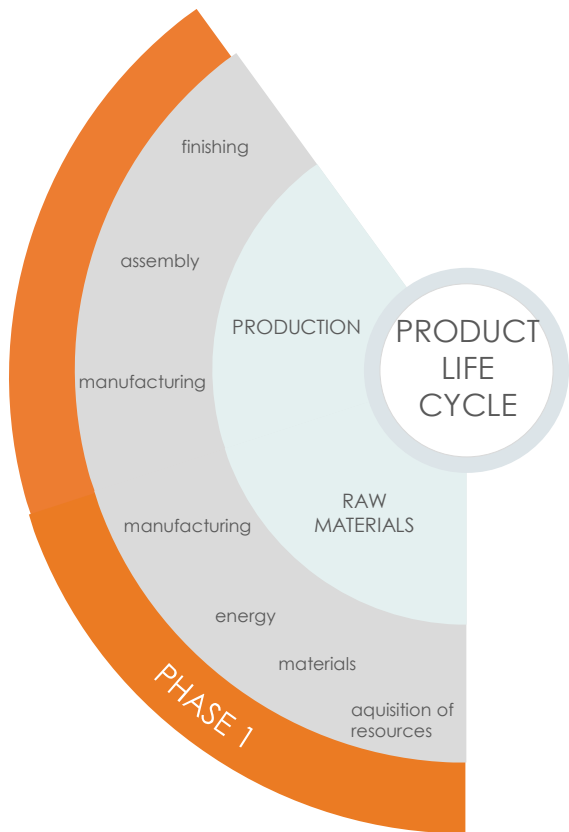
- who works with suppliers who are certified ISO14001:2015; who has FCS rated materials;
- Europe based producers of raw materials to minimize transportation
- as less as possible variety of materials; optimal 4-6 different materials
- try to chose veneers instead of solid wood. Most growing wood - poplar, bamboo, rattan
- metal - the biggest global resources are carbon steel. Quickest processing fully recyclable
- use natural or even better artificial stones (eg. silestone, stone leaf, etc)
- eliminate usage of acrylics or to keep them minimal
- minimize variation of the furniture content within concept



- EURO5 transportation would be good to consider, but much less trucks are available and service is more expensive
- eliminate product storing in-house
- packaging into the customized boxes (to do them optimal to the size); Only FSC cardboard; minimize bubble foils and synthepon

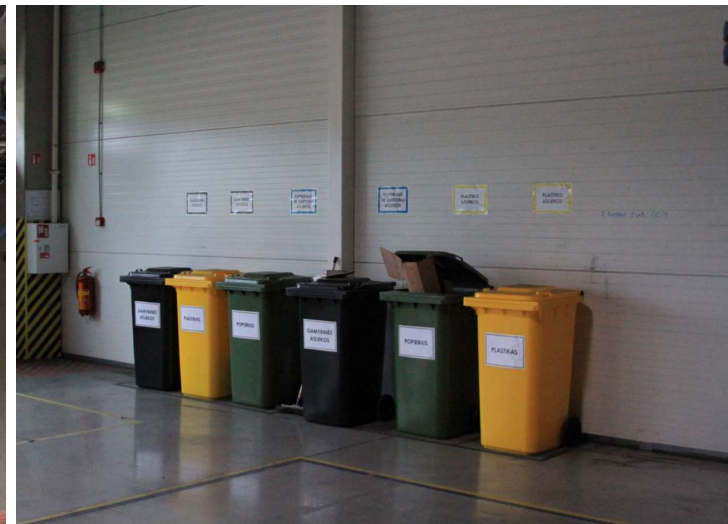
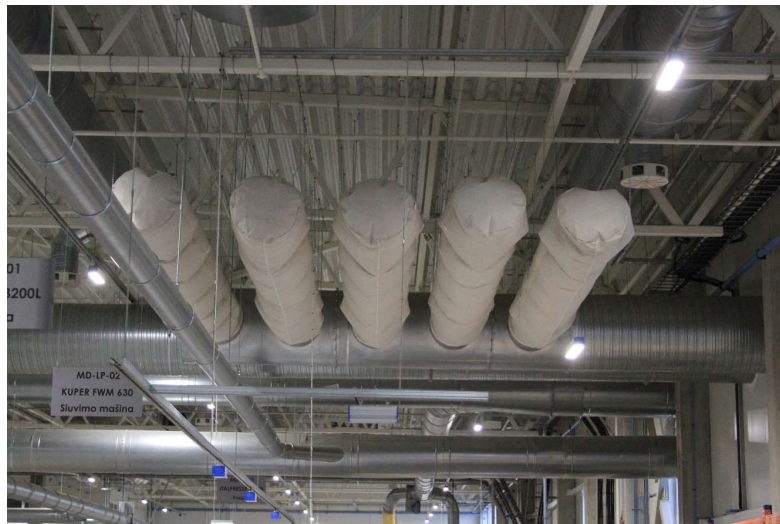
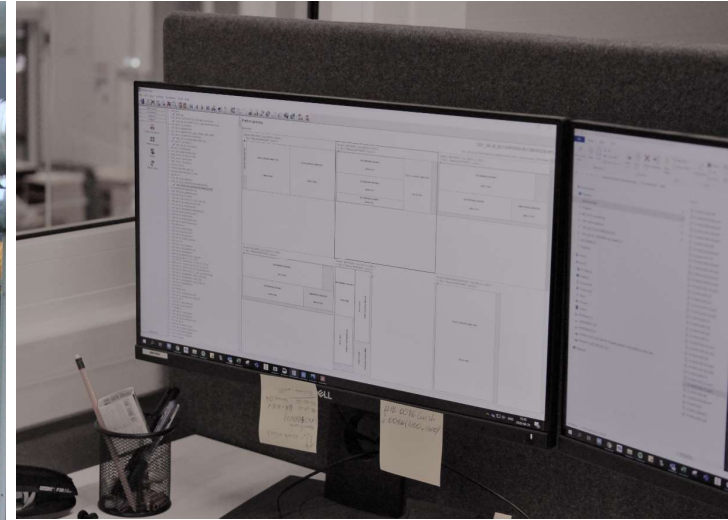
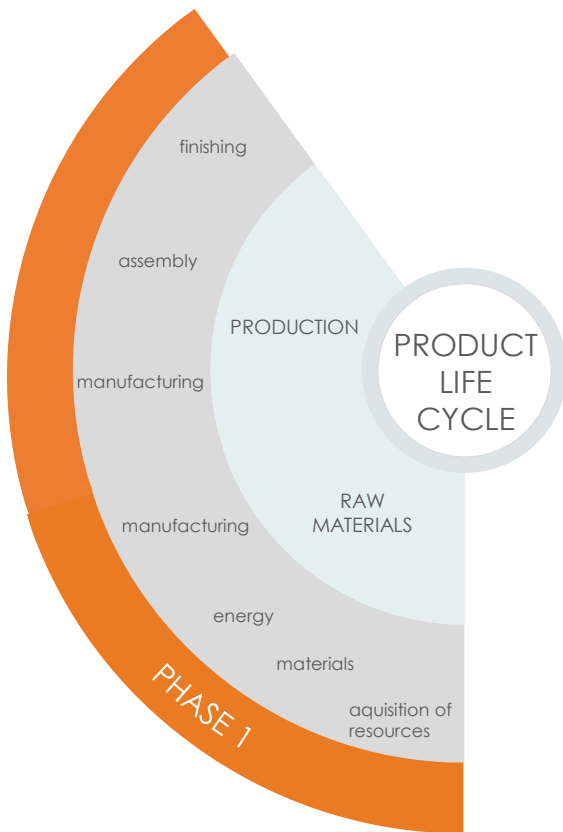
- furniture producer to be capable to provide this service.
- having proper exploitation & care today's furniture resist and last for ages;)
- the biggest focus has to be placed on what is happening after the dismantling

- arrangement to be set for used furniture disposal between client and local recycling companies
- Alternate solution, fixture manufacturer to collect items for recycling (transportation factor to be considered)



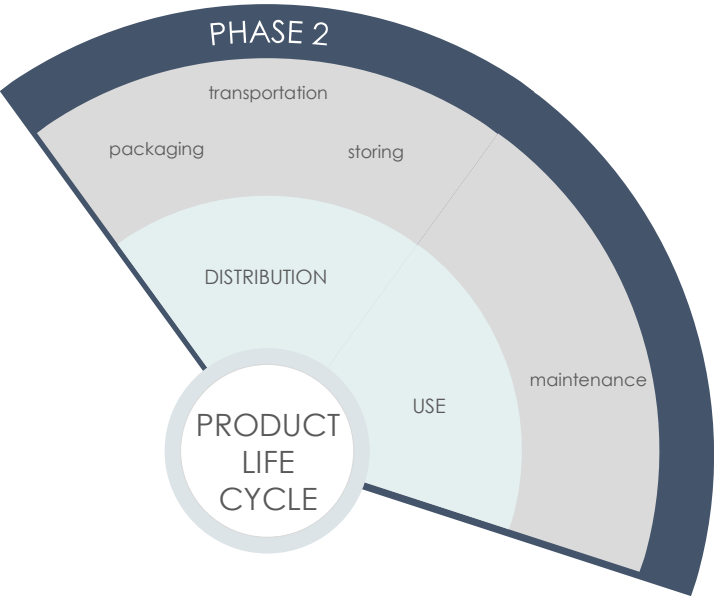
FITSOUT: IN-HOUSE RECYCLING SCHEMES TO REUSE AND CLEAN SUBPRODUCTS IN MANUFACTURING PROCESS (dust, leftover boards for recycling, water, air filtration)

FITSOUT
SUSTAINABILITY INITIATIVE



FITSOUT: IN-HOUSE RECYCLING SCHEMES AND 'GREEN' POLICIES (dust, tools for 'smart' production – optimization, recycling residual products)

FITSOUT
SUSTAINABILITY INITIATIVE



FITSOUT 'GREEN'IN-HOUSE POLICIES (packaging into customized boxes (to do them optimal to the size); Only FSC cardboard; minimize bubble foils and synthepon